

Internet de las Cosas Tecnologías



Rogelio Ferreira Escutia

Profesor / Investigador
Tecnológico Nacional de México
Campus Morelia



¿Con qué tecnologías
puedo crear aplicaciones
IoT?

Sensores

Sensores



Pasa el mouse encima de la imagen para aplicar zoom



Procesamiento

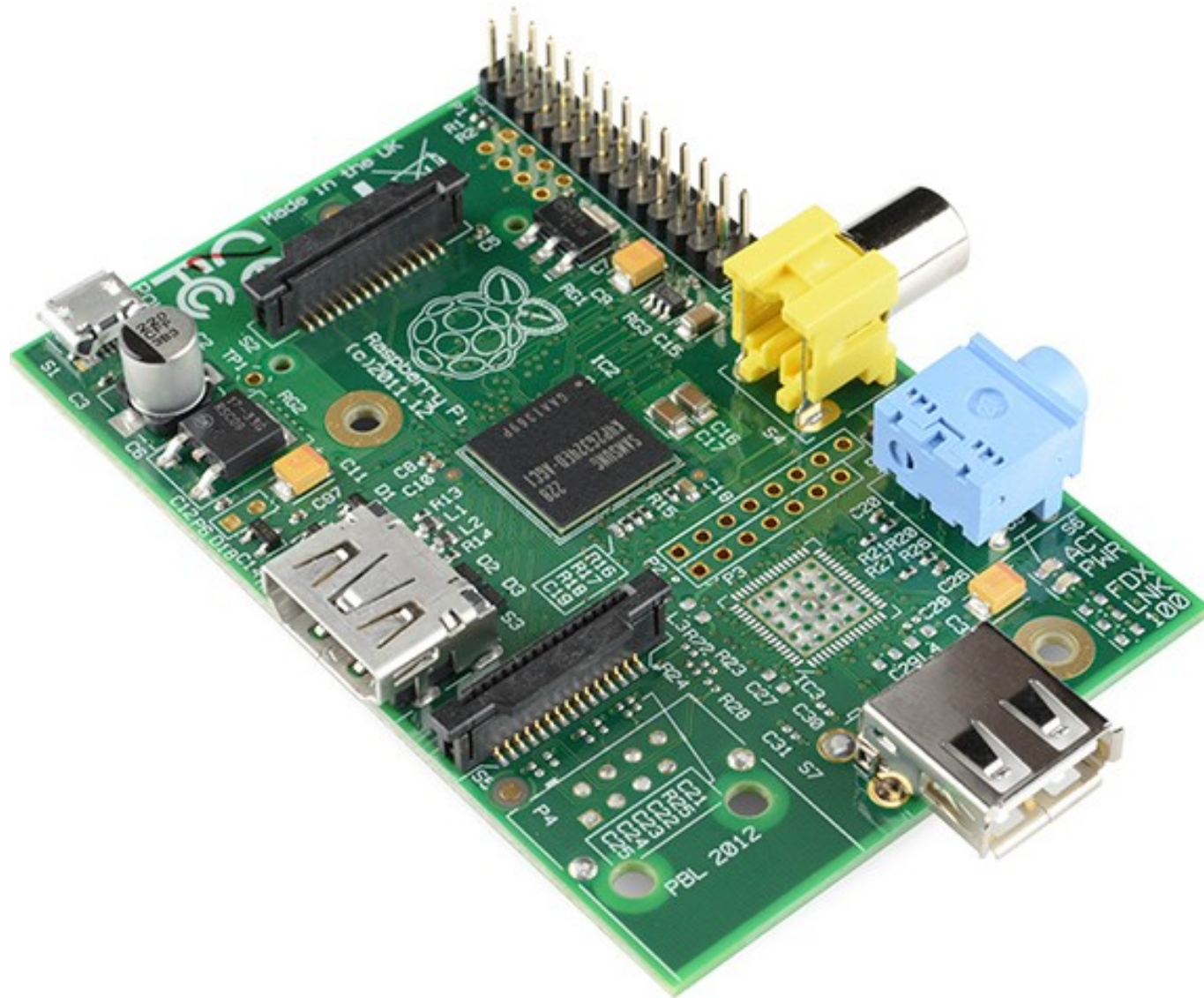
Arduino (2003)



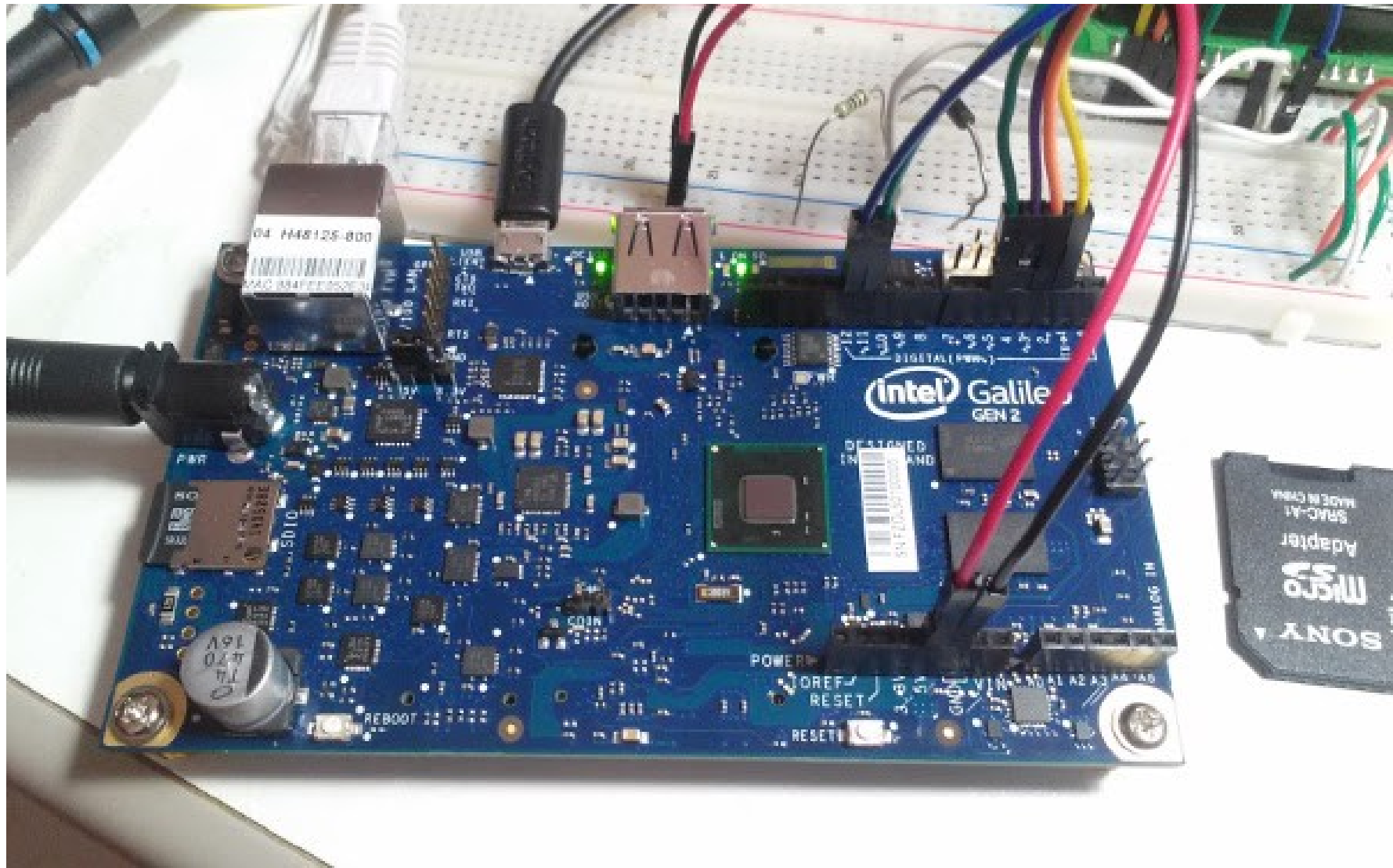
BeagleBoard (2008)



Raspberry Pi Modelo A (2012)



Galileo (2013)



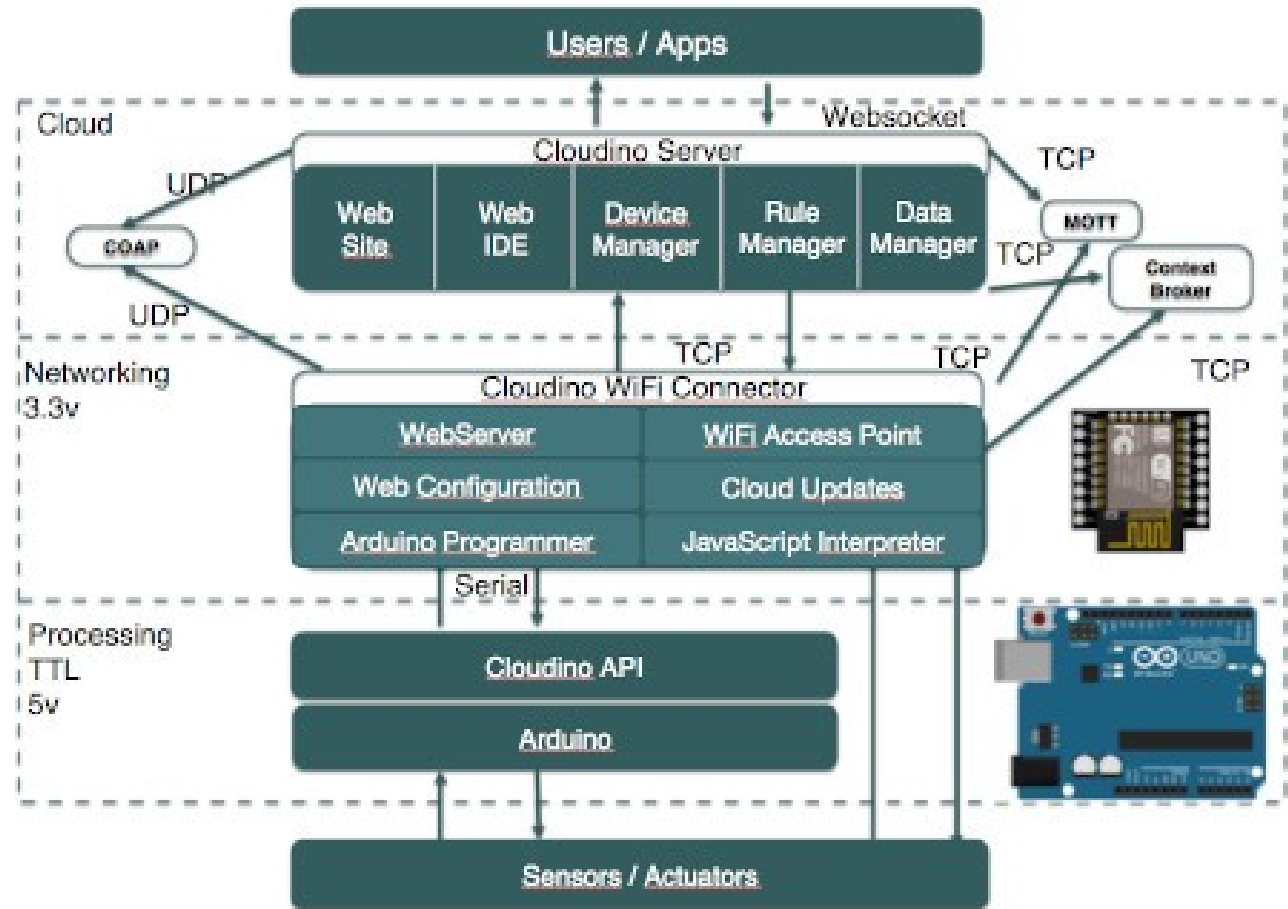
Raspberry Pi Zero (2015)



Orange Pi Plus 2E (2016)



Cloudino (2016)



Raspberry Pi 3B+ (2018)



Raspberry Pi 4 (2019)



Jetson Nano (2019)

- CPU: Quadcore – GPU: 128 Cores



Raspberry Pi 400 (2020)



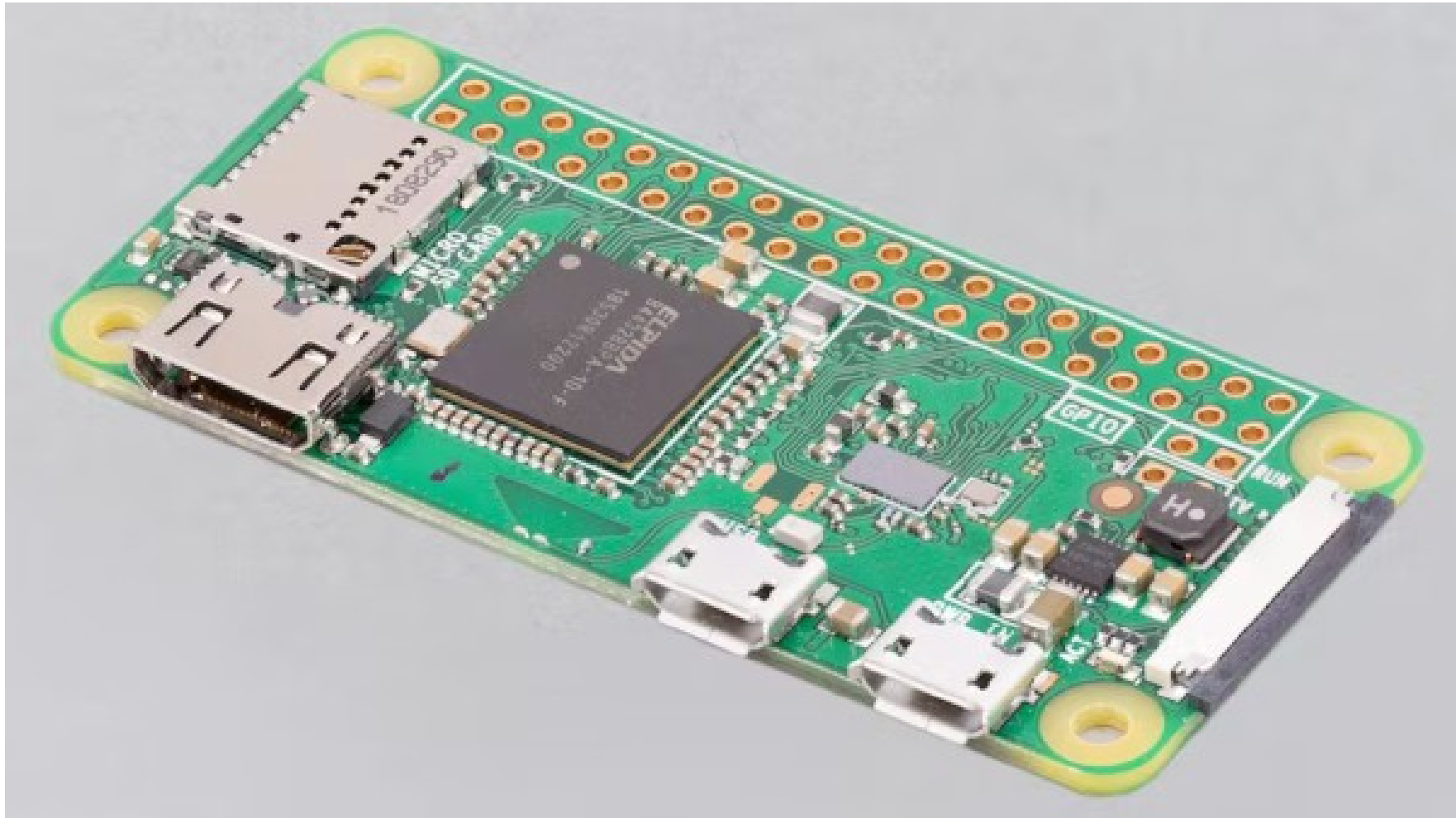
Raspberry Pi Industrial (2020)



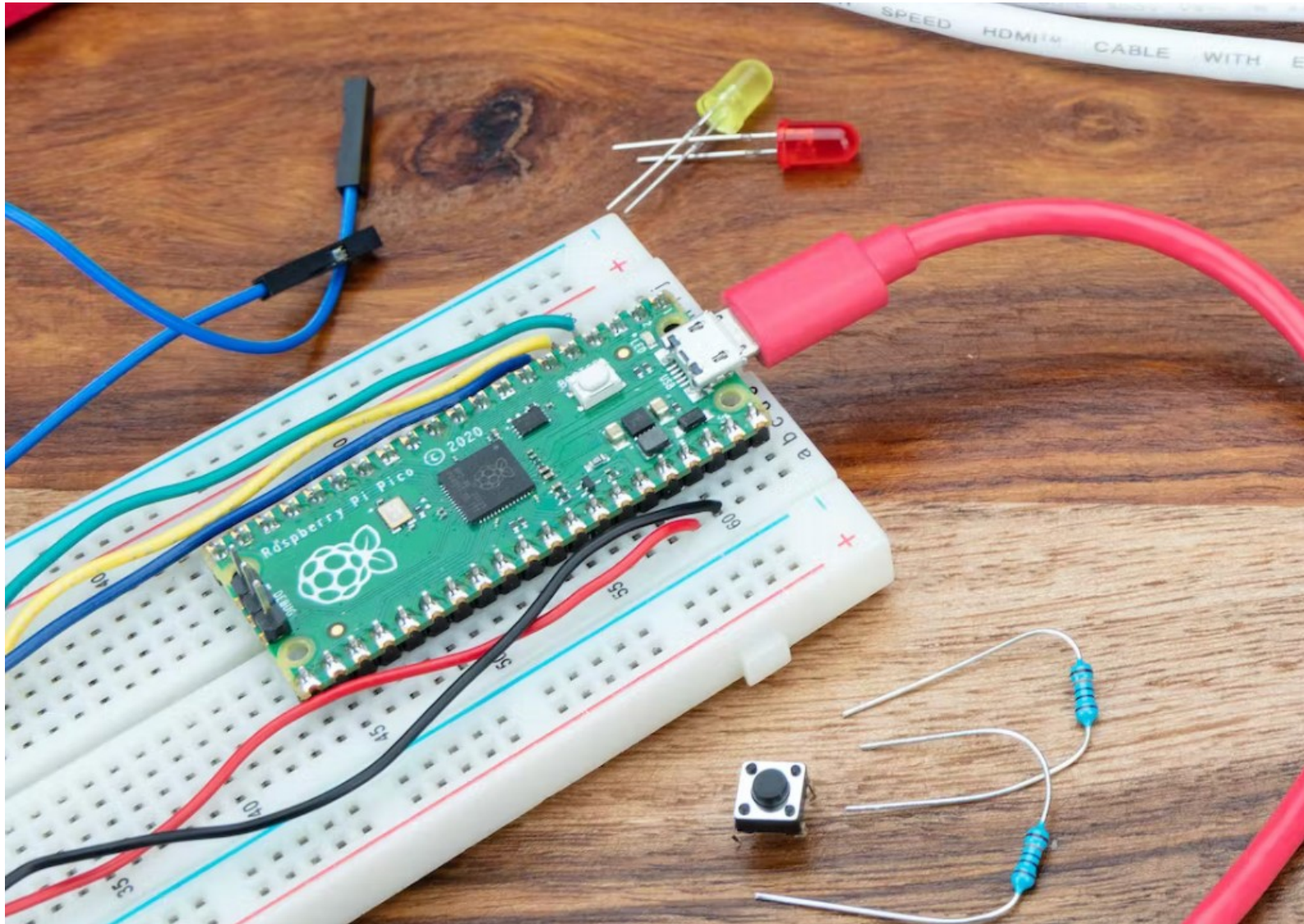
"Revolution Pi, el mini PC industrial basado en Raspberry Pi", <https://computerhoy.com/noticias/tecnologia/revolution-pi-mini-pc-industrial-basado-raspberry-pi-570983>, febrero 2020



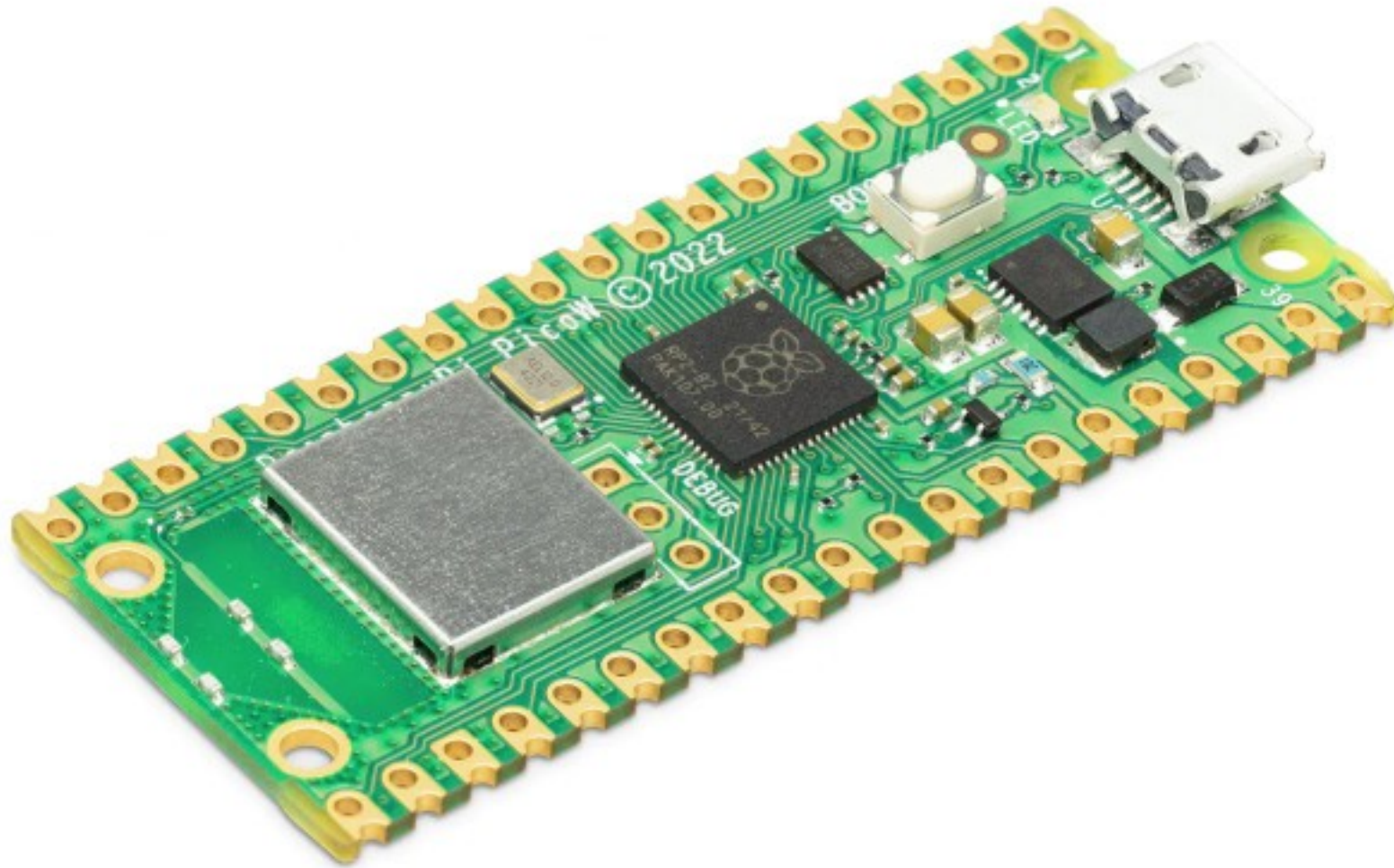
Raspberry Pi Zero W (2021)



Raspberry Pi Pico (2021)



Raspberry Pi Pico W (2022)



Nvidia Jetson AGX Orin (2022)

- 64GB RAM, 275 TOPS, 2048 núcleos y 64 núcleos Tensor



Comunicaciones

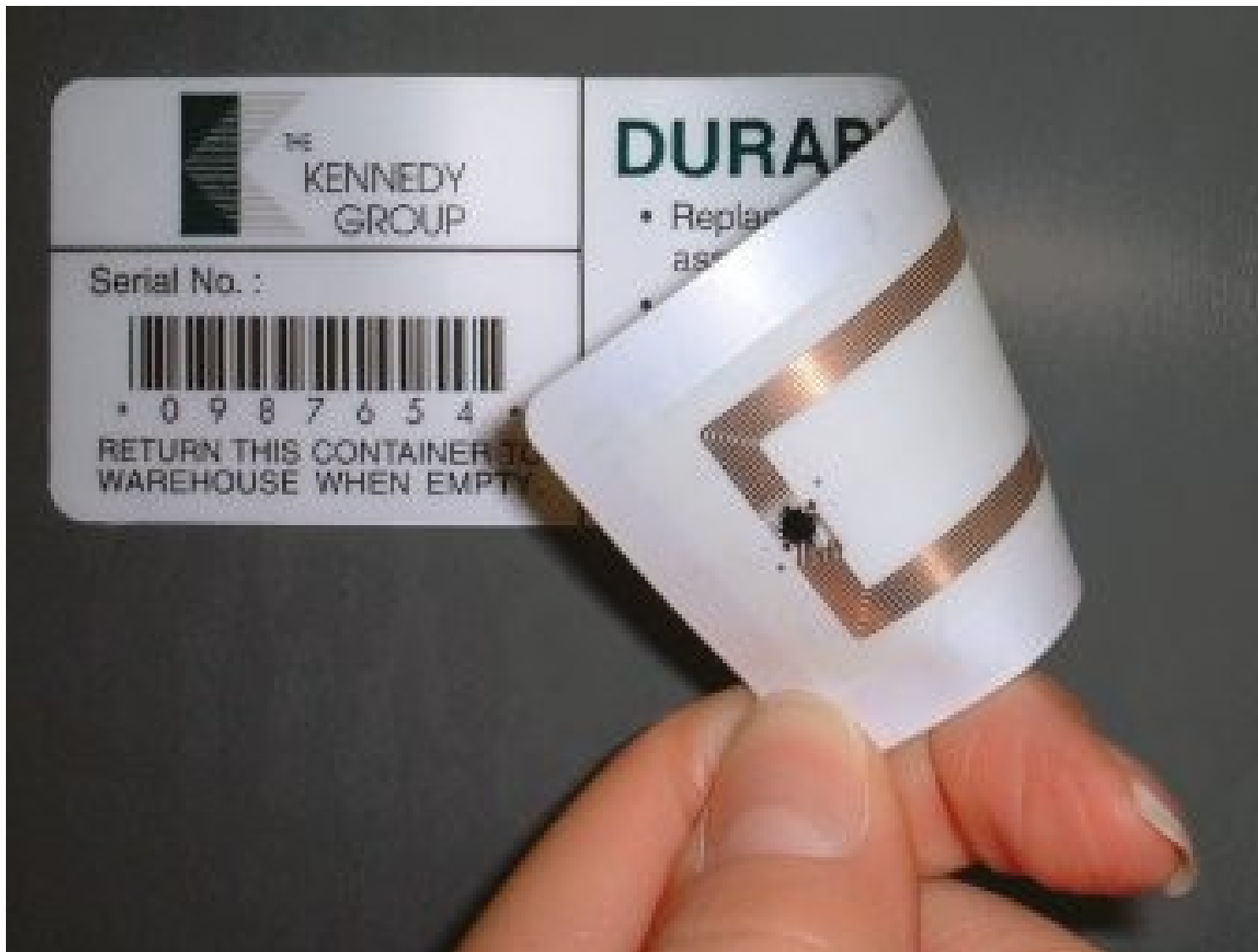
Bluetooth



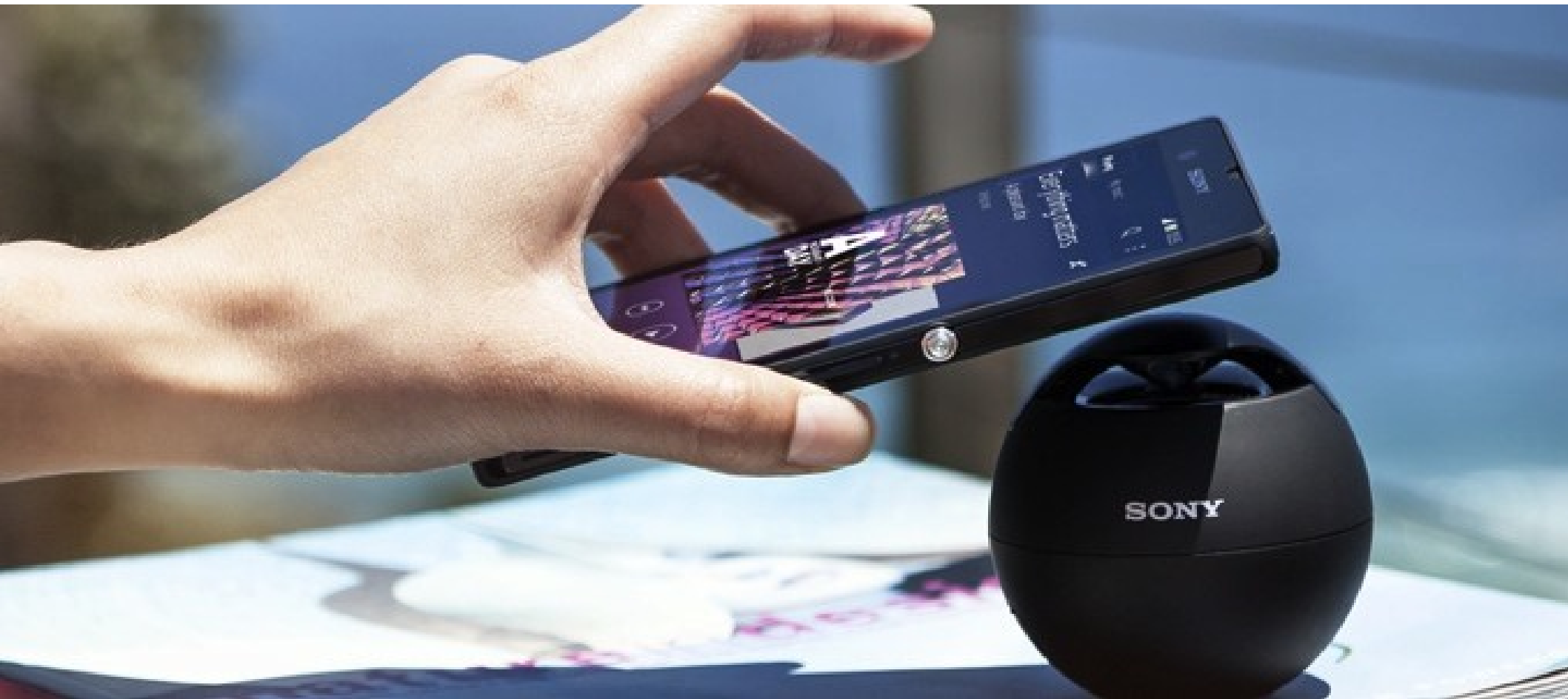
WiFi



RFID



NFC

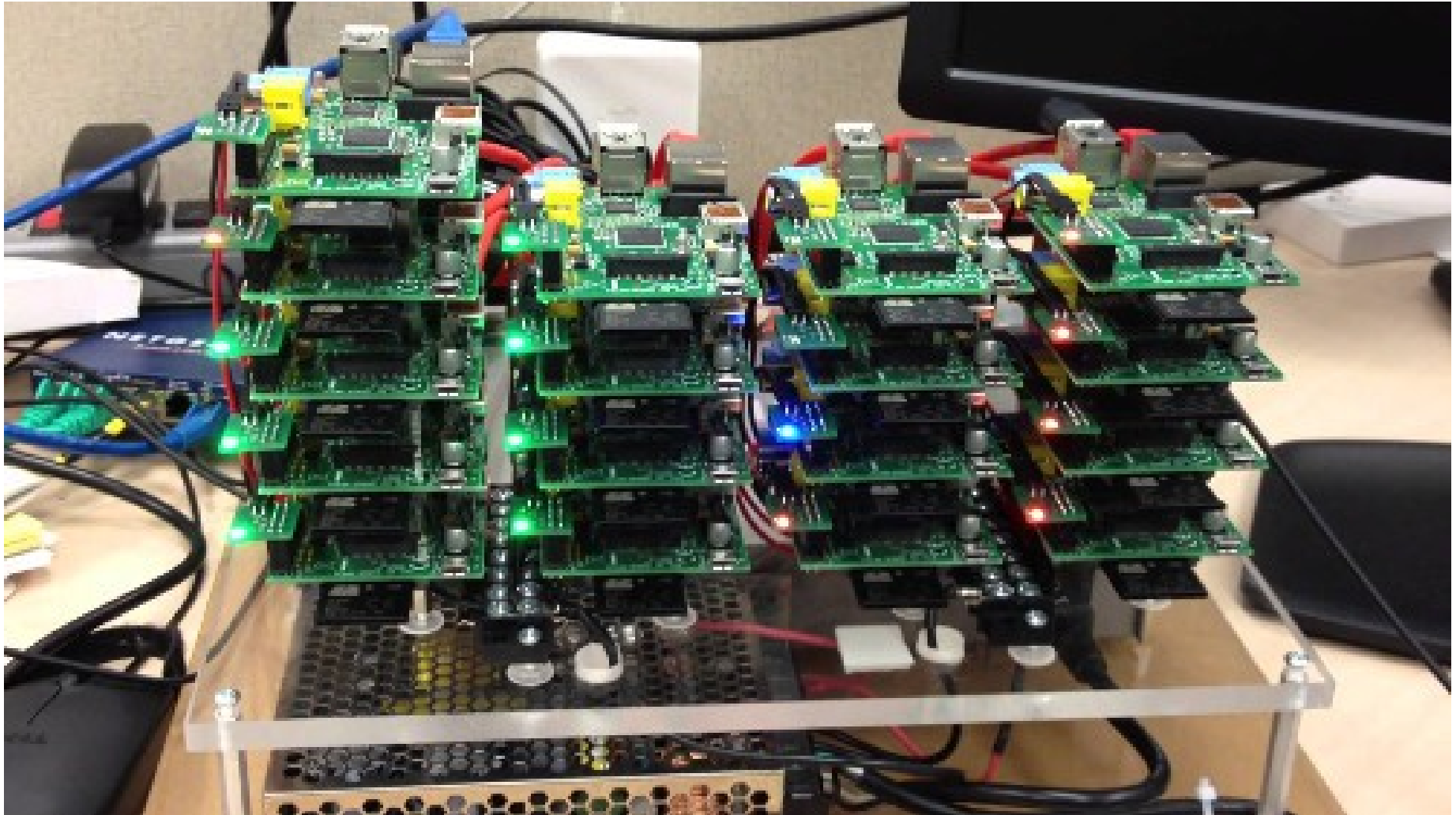


Almacenamiento

Almacenamiento y Procesamiento



Almacenamiento y Procesamiento

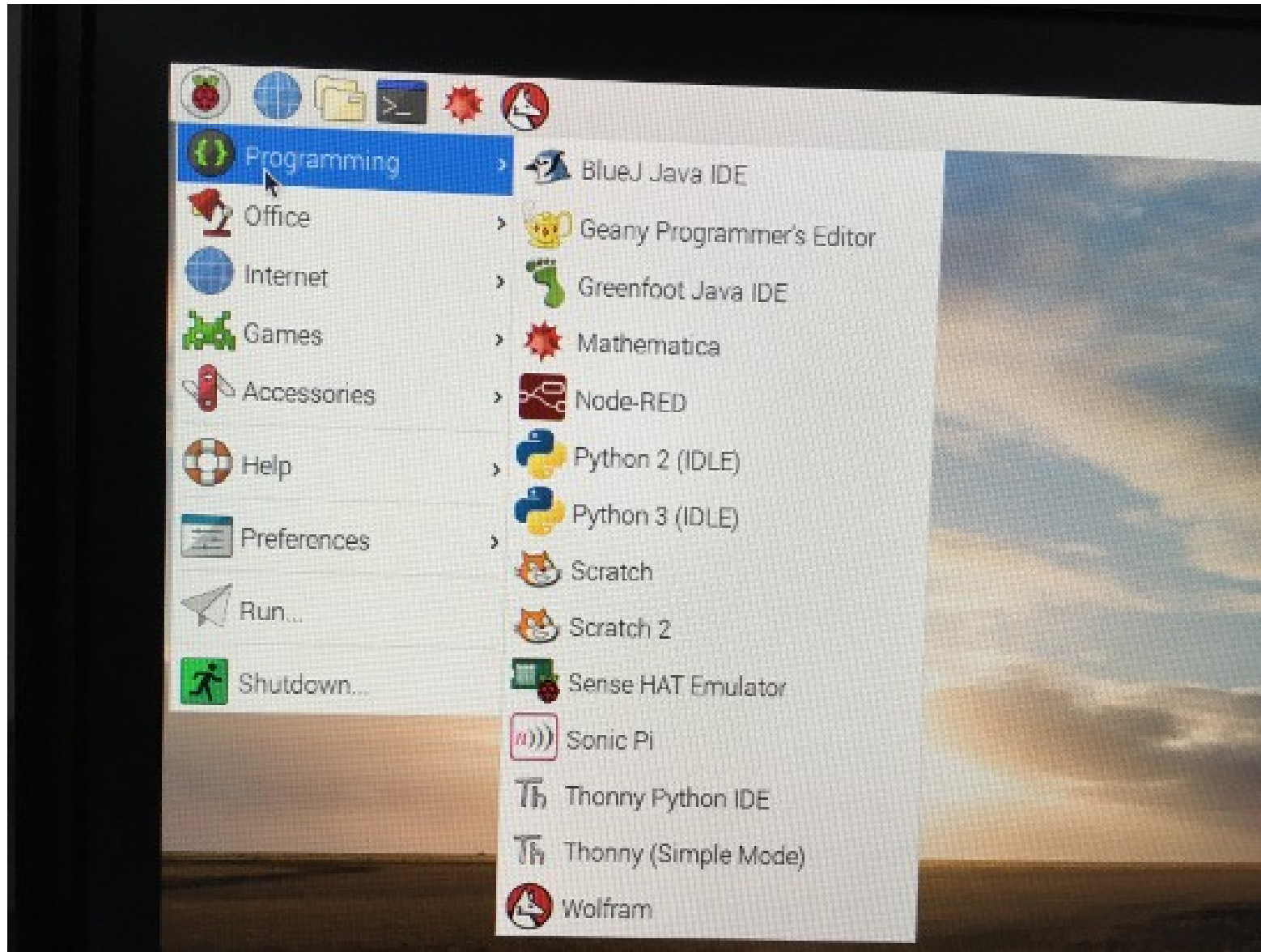


Sistemas Operativos para Raspberry Pi

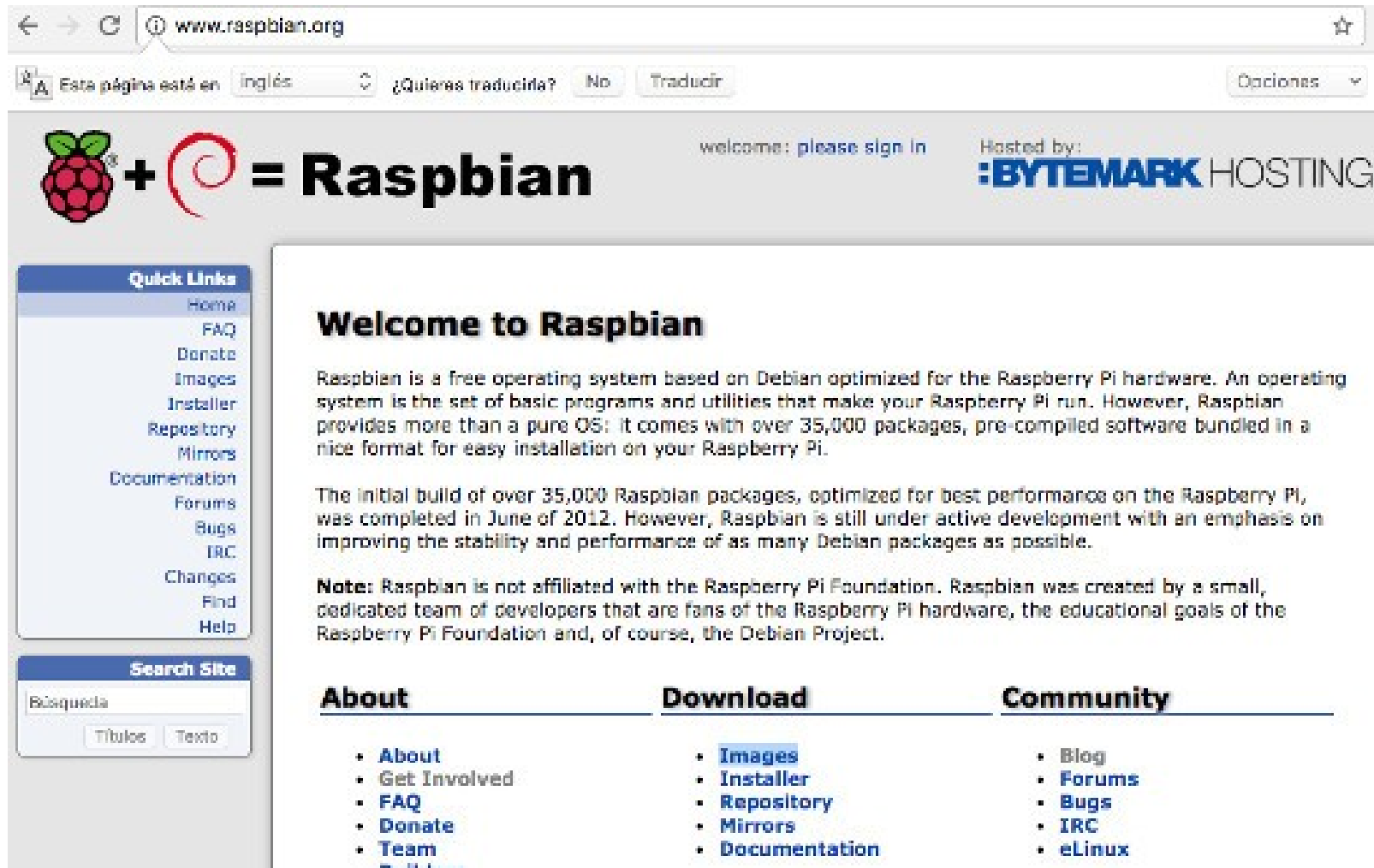
Escritorio de Raspbian



Programación en Raspbian



Página Oficial de Raspbian



The screenshot shows the official Raspbian website. The browser address bar displays www.raspbian.org. The page header features the Raspbian logo (a Raspberry Pi icon plus a red swirl) and the text "Raspbian". To the right, it says "welcome: please sign in" and "Hosted by: BYEMARK HOSTING".

Quick Links

- Home
- FAQ
- Donate
- Images
- Installer
- Repository
- Mirrors
- Documentation
- Forums
- Bugs
- IRC
- Changes
- Find
- Help

Search Site

Búsqueda

Títulos Texto

Welcome to Raspbian

Raspbian is a free operating system based on Debian optimized for the Raspberry Pi hardware. An operating system is the set of basic programs and utilities that make your Raspberry Pi run. However, Raspbian provides more than a pure OS: it comes with over 35,000 packages, pre-compiled software bundled in a nice format for easy installation on your Raspberry Pi.

The initial build of over 35,000 Raspbian packages, optimized for best performance on the Raspberry Pi, was completed in June of 2012. However, Raspbian is still under active development with an emphasis on improving the stability and performance of as many Debian packages as possible.

Note: Raspbian is not affiliated with the Raspberry Pi Foundation. Raspbian was created by a small, dedicated team of developers that are fans of the Raspberry Pi hardware, the educational goals of the Raspberry Pi Foundation and, of course, the Debian Project.

About	Download	Community
<ul style="list-style-type: none">• About• Get Involved• FAQ• Donate• Team• Builders	<ul style="list-style-type: none">• Images• Installer• Repository• Mirrors• Documentation	<ul style="list-style-type: none">• Blog• Forums• Bugs• IRC• eLinux

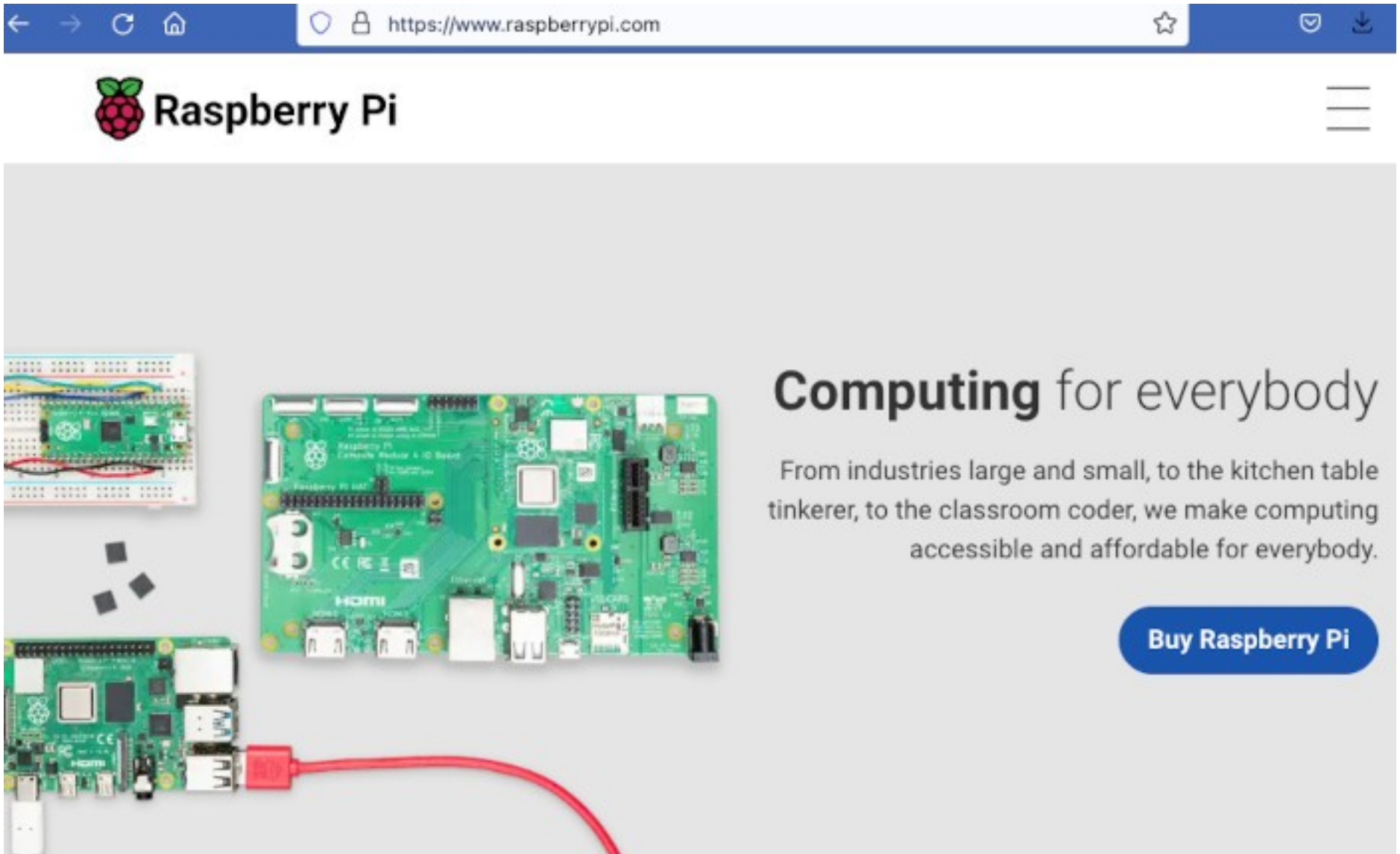
Página Oficial de Raspberry Pi (org)



Empowering young people to use computing technologies to shape the world

Find out more

Página Oficial de Raspberry Pi (com)



Sistema Operativo Oficial



Raspberry Pi OS


Your Raspberry Pi needs an operating system to work. This is it. Raspberry Pi OS (previously called Raspbian) is our official supported operating system.



Sistemas Operativos Disponibles



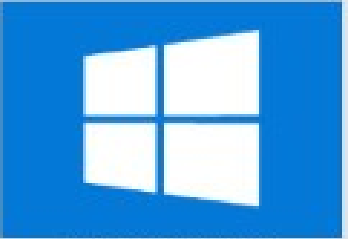


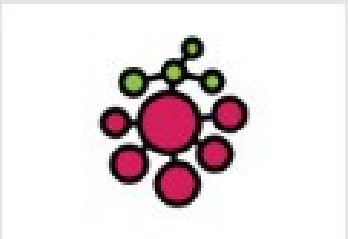
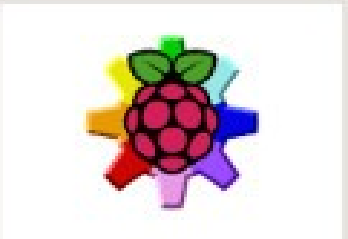

Seguro | <https://www.raspberrypi.org/downloads/>

página está en ¿Quieres traducirla?

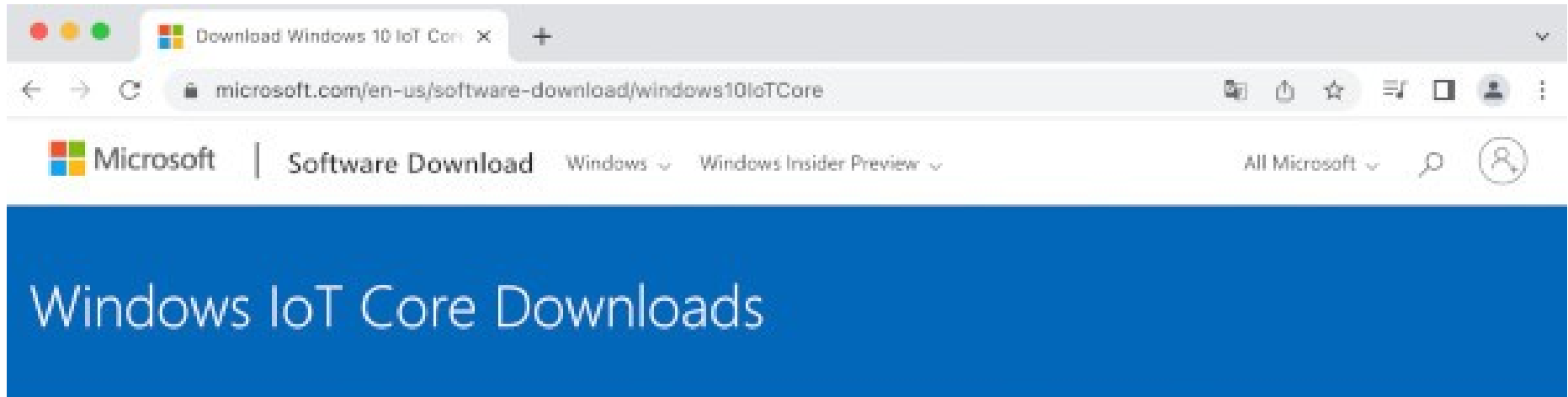
 [BLOG](#) [DOWNLOADS](#) [COMMUNITY](#) [HELP](#) [FORUMS](#) [EDUCATION](#)

Third Party Operating System Images

Third party operating system images for Raspberry Pi are also available:

 UBUNTU MATE	 SNAPPY UBUNTU CORE	 WINDOWS 10 IOT CORE	 OSMC
 LIBREELEC	 PINET	 RISC OS	 WEATHER STATION

Sistemas Operativos Disponibles



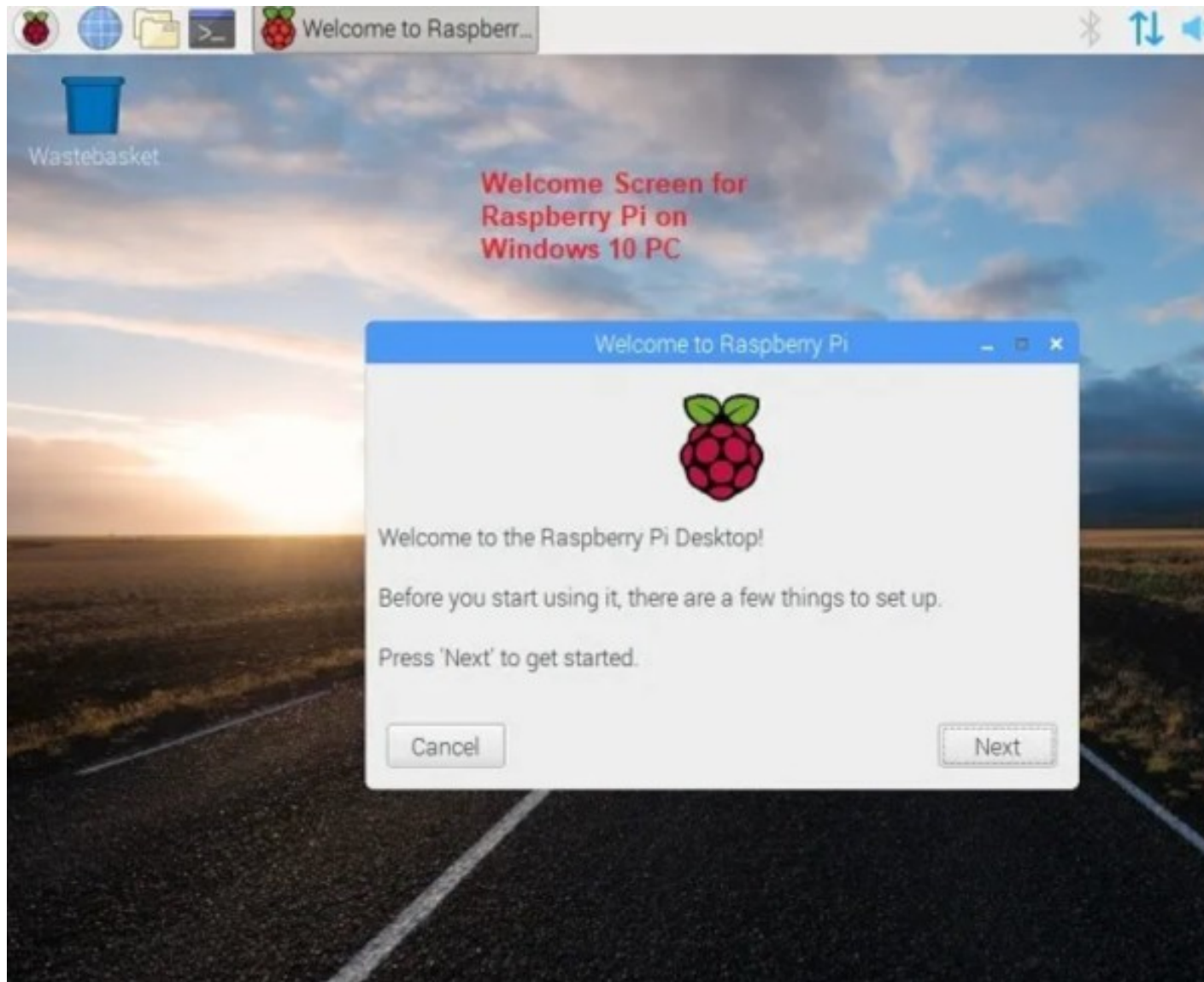
Windows IoT Core

These are the core OS images that power the Windows IoT platform. Windows 10 IoT Core is the smallest version of the Windows 10 editions that leverages the Windows 10 common core architecture. These editions enable building low-cost devices with fewer resources. Development for Windows 10 IoT Core leverages the Universal Windows Platform. Learn more about Windows 10 IoT Core [here](#).

Please see [3rd party notices](#) for BSP restrictions.

Emuladores para Raspberry Pi

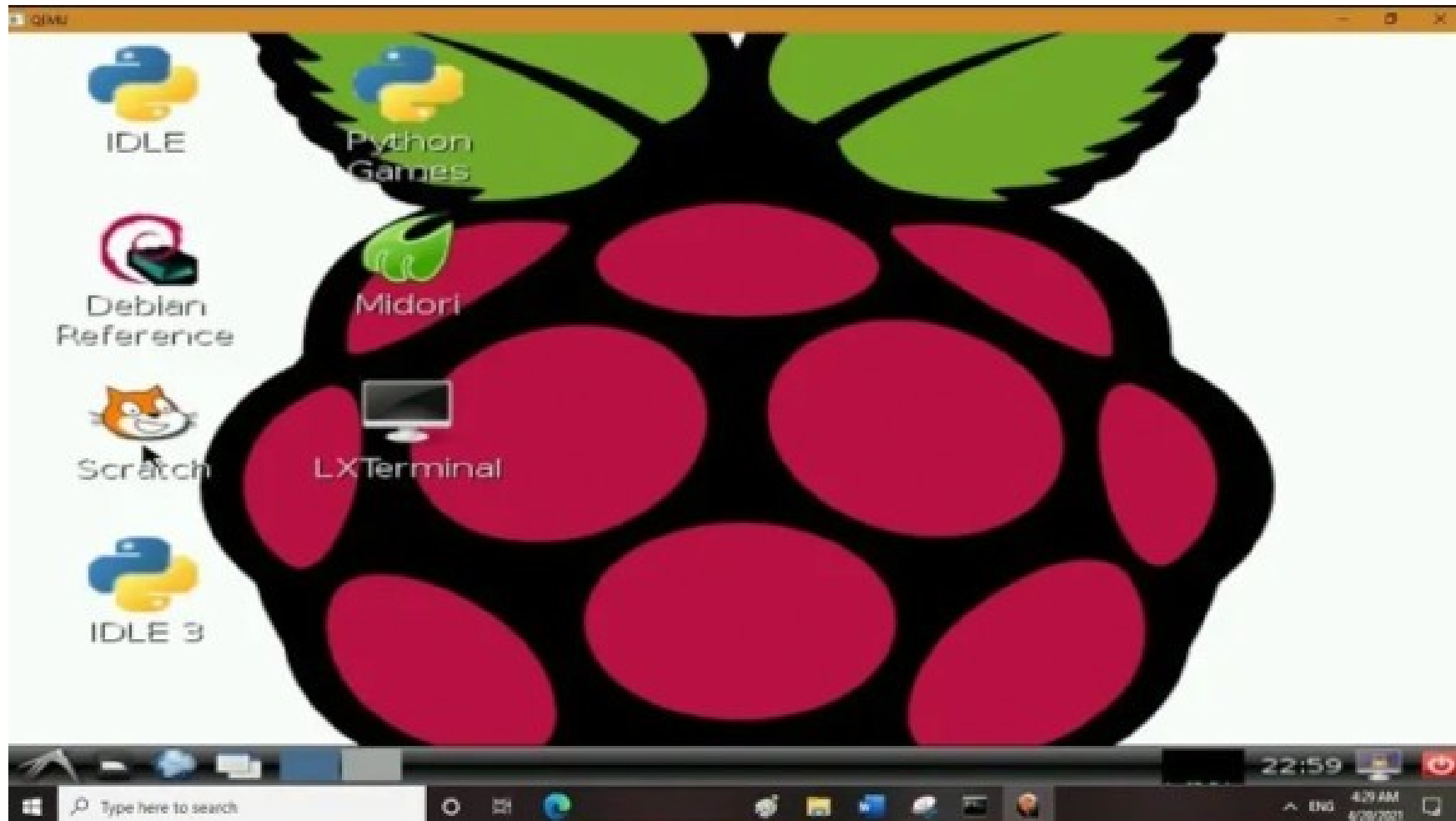
Raspberry Pi for Desktop



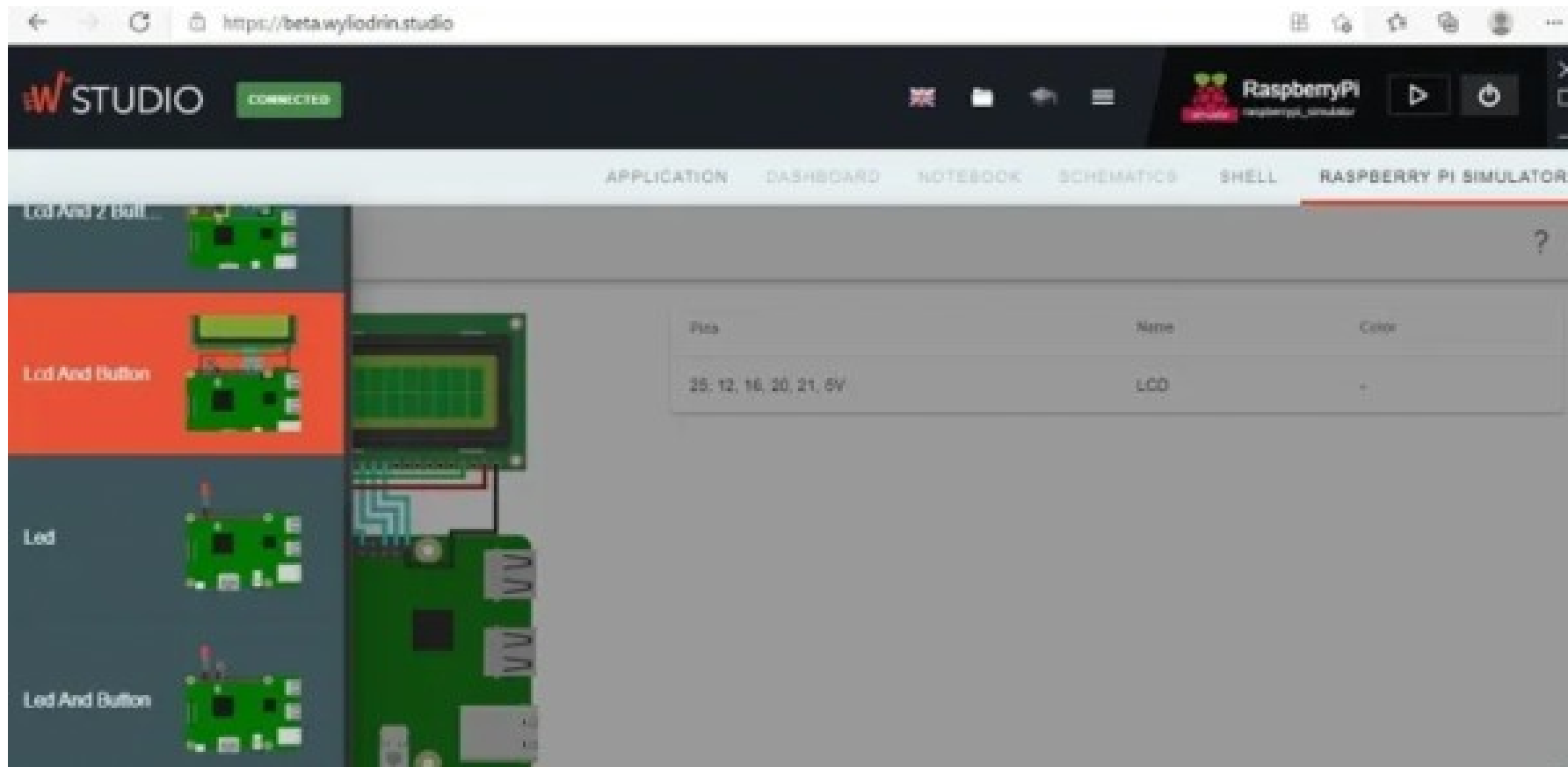
Simulador en línea

```
2 * IoT Hub Raspberry Pi NodeJS - Mic
3 */
4 const wpi = require('wiring-pi');
5 const Client = require('azure-iot-d
6 const Message = require('azure-iot-
7 const Protocol = require('azure-iot
8 const BME280 = require('bme280-sens
9
10 const BME280_OPTION = {
11   i2cBusNo: 1, // defaults to 1
12   i2cAddress: BME280.BME280_DEFAULT
13 };
14
15 const connectionString = '[Your IoT
16 const LEDPin = 4;
17
18 var sendingMessage = false;
19 var messageId = 0;
20 var client, sensor;
21 var blinkLEDTIMEOUT = null;
22
23 Run Reset
24
25 Haga clic en el botón 'Run' para ejecutar
26 Haga clic en el botón 'Stop' para detener
27 Haga clic en 'Reset' para restablecer el
28 > []
```

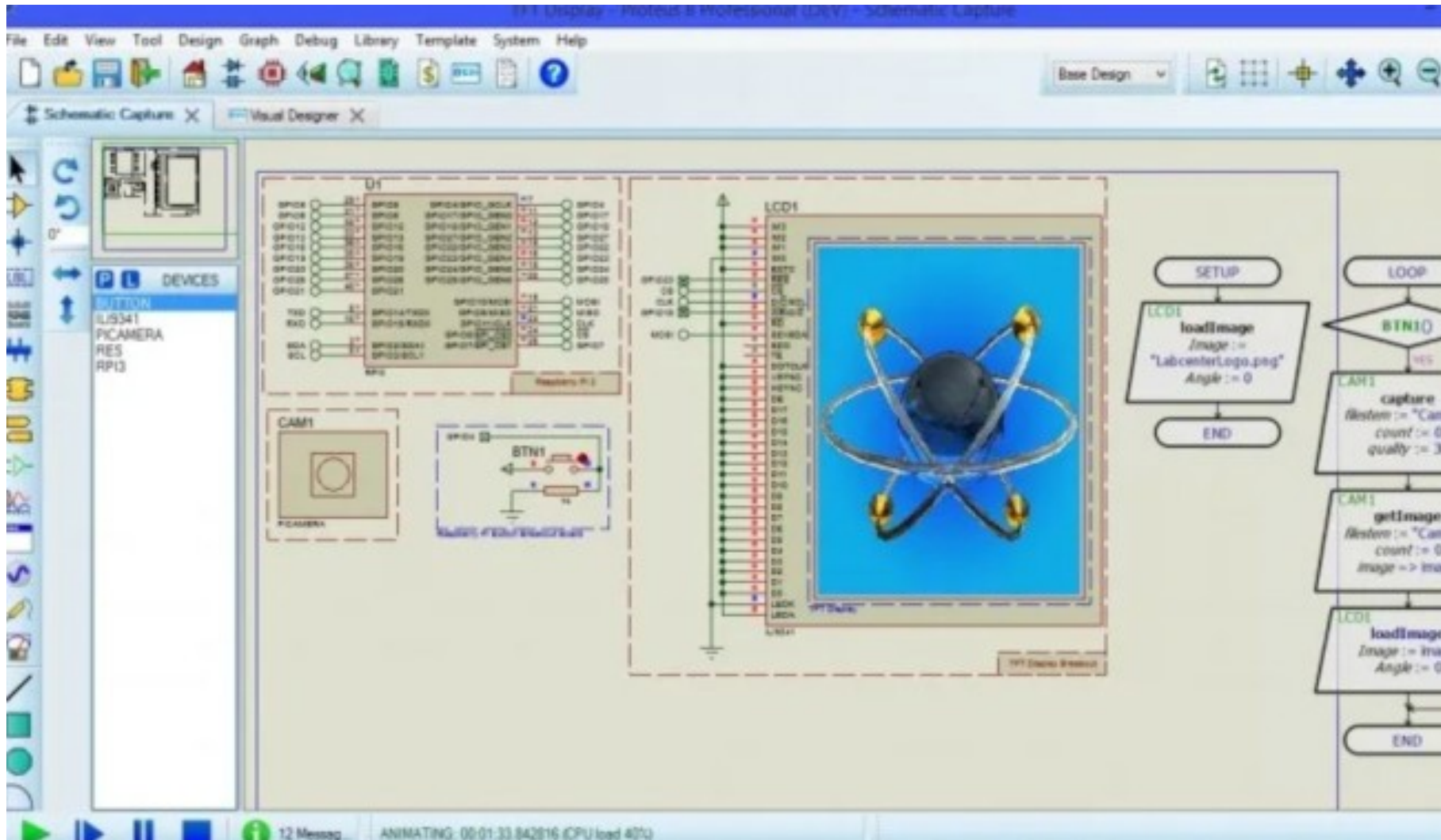
Raspberry Pi QEMU en Windows



Wylodrin Studio



Labcenter Visual Designer





Rogelio Ferreira Escutia

Profesor / Investigador
Tecnológico Nacional de México
Campus Morelia



rogelio.fe@morelia.tecnm.mx



rogeplus@gmail.com



xumarhu.net



[@rogeplus](https://twitter.com/rogeplus)



[https://www.youtube.com/
channel/UC0on88n3LwTKxJb8T09sGjg](https://www.youtube.com/channel/UC0on88n3LwTKxJb8T09sGjg)



[rogelioferreiraescutia](https://www.linkedin.com/in/rogelioferreiraescutia)

